

CEN101HD

Mobile Digital Video Recorder



Main Features

- ◆ Supports 4 channels AHD+1 channel 720P
- ◆ Supports hard disk (maximum capacity 2TB)
- ◆ Supports GPS for real time location and speed tracking
- ◆ Supports WIFI for alarm files download OR Built-in 3G/4G for live view and remote management
- ◆ Supports data recovery technology

Overview

CEN101HD is the Mobile Digital Video Recorder specially designed for vehicle video surveillance and remote monitoring. It has a high-speed processor and embedded operating system, combining with the most advanced H.264 video compression / decompression technology, network, as well as GPS positioning technology. It supports not only video recording in 720P, AHD, WD1, HD1 and CIF formats, but also vehicle driving information, video recording and wireless data upload. An ultra reliable unit, backed up with our standard two year warranty.

Specification

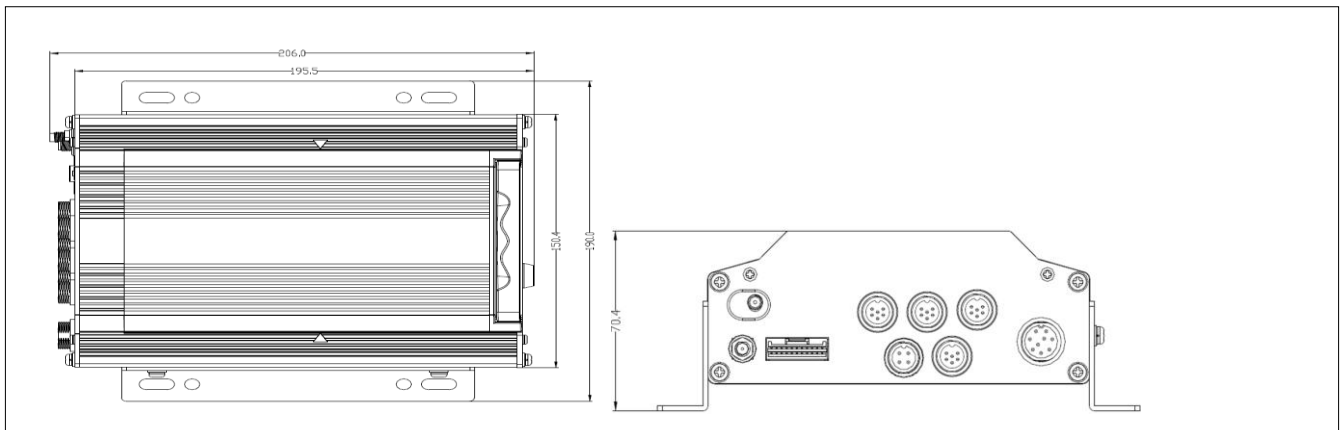
Function Overview		Preview, Recording, Playback, Network, Positioning
System	OS	Linux 3.0.8
	Control Mode	Easy Check, mouse, network(3G/4G/WIFI), CP4, remote control
Video	Input	4 channels 720P
	Output	1 channel
	Total Resource	PAL: (4x25)FPS WD1+30FPS 720P(IPC) or (4x12)FPS 720P(AHD)+30FPS 720P(IPC) NTSC: (4x30)FPS WD1 +30FPS 720P or (4x15)FPS 720P(AHD)+30FPS 720P(IPC)
	Video Signal Standard	Electrical level: 1Vpp Impedance: 75Ω NTSC/PAL Optional
Audio	Input	5 channels
	Output	1 channel
	Audio Signal Standard	Electrical level: 2Vpp Input impedance: 4.7kΩ
Display	Display Split	1/4
	OSD	GPS information, alarm, vehicle No., speed, date/time
	Operation Interface	Semi-transparent GUI
Recording	Video/Audio Compression	Video: H.264 Audio: ADPCM, G.711A, G.711U
	Image Resolution	Analog: PAL: 720P(1280X720, WD1(928X576), WHD1(928X288), WCIF(464X288), D1(704X576), HD1(704x288), CIF(352x288); NTSC: 720P(1280X720, WD1(928X480), WHD1(928X240), WCIF(464X240), D1(704x480), HD1(704x240), CIF(352x240); Digital: 720P(1280X720);
	Image Quality	1-8 levels (Adjustable)
	Recording Mode	Boot up/Manual/Schedule/Alarm
	Pre-recording	0-60minutes
	Post-recording	0-30 minutes
Playback	Playback Channel	1 channel by local playback
	Search Mode	Date/time, channel, event
Network	WIFI/3G/4G(Optional)	802.11b/g/n/EVDO/WCDMA/TDD-LTE/FDD-LTE
	IPC Ethernet	6-pin M12(10/100M x 4, PON power supply)
Locating	GPS	Location tracking, speed detection and time sync
Storage	Hard Disk	2.5" SATA hard disk x 1 (Up to 2TB)

CEN101HD

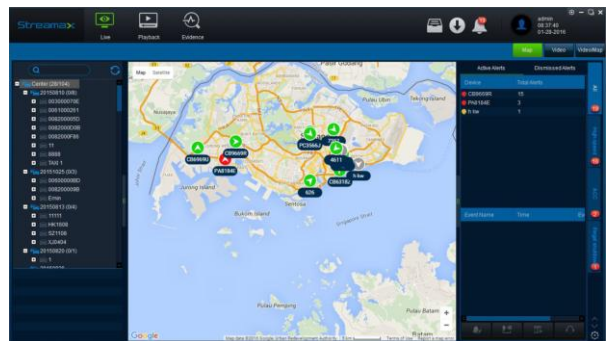
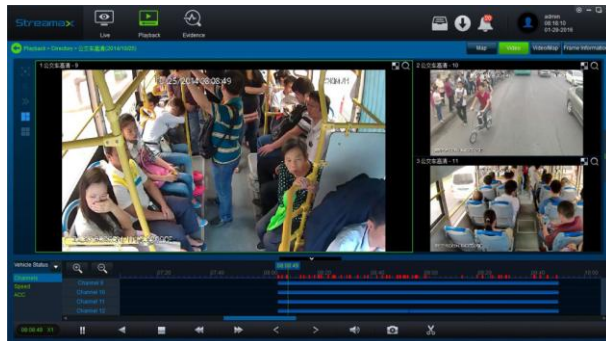
Mobile Digital Video Recorder

Interface	USB	USB2.0 x 1
	SIM	SIM slot x 1
	RS232	RS232 x 1
	Sensor	8 inputs, 2 outputs
	Speed	1 channel pulse speed detection
	Intercommunication	I mic interface
Power	Input	DC8-36V, ACC
	Output	5V@1000mA
	Max Power Consumption	32W
	Standby Power Consumption	≈0W
Physical Characteristic	Dimension (L × W × H)	206.0 x 190.0 x 70.4mm
	Weight	1.24Kg
Environment	Operating Temperature	-40°C- +70°C(With heater) or -10°C- +70°C
	Operating Relative Humidity	8%-90

Dimension (mm)






PC Software



CEN101HD

Mobile Digital Video Recorder

Standard accessories

Accessories	Description	Quantity	Accessories	Description	Quantity
	Vehicle fuses (7.5A and 15A)	2		Braces	1 Set
	9 pin aviation power input wire	1		Screws	6
	MDVR key	1		Remote controller	1

Optional accessories

Accessories	Description	Accessories	Description
	6 Axis Sensor		LED panel
	OBD+6 Axis Sensor		UPS 3.0
	CP4 and Cable		Voice Announcer and Cable
	CP4 Bracket (3 Types)		Easy Check
	CP4 Transfer Cable		RS232/485 and I/O sensor Alarm Cable
	Extension cable (One RS232 extends to 2pcs RS232 and 2pcs RS485)		Transfer Cable (RS232 to RS485)
	Built in 4G module and Antenna		GPS module and Antenna
	Built-in WIFI module and Antenna		